

VRF

Technical Data Book

Slim duct for America (R410A, 60Hz, HP)



Model : AM*FNLDCH*****

History

Version	Modification	Date
Ver.1.0	Release Slim Duct for America (R410A, 60Hz, HP)	15.11.04
Ver.1.1	Add up the unit (InH2O) in PQ option code	15.12.28
Ver1.2	Add N.A. models to electrical diagram	19.12.18

1 Nomenclature

Indoor Units

Model name

AM

024

F

N

4

D

C

H

/

AA

①

②

③

④

⑤

⑥

⑦

⑧

(Buyer)

① Classification

AM	DVM
----	-----

② Capacity

kBtu/h (3digits)

③ Version

E	2012
F	2013
G	2014

④ Product Type

X	Outdoor Unit
N	Indoor Unit

⑤ Product Notation

1	1 way cassette
2	2 way cassette
N	4 way cassette (interior)
4	4 way cassette
L	LSP Duct (Slim Duct)
M	MSP Duct
H	HSP Duct
C	Ceiling
J	Console
F	Floor Standing
T	NEO FORTE
Q	NEO FORTE (EEV)
B	HYDRO UNIT (Floor Standing)
K	FLAT(CEILING TYPE) VTL

⑥ Feature

D	DELUXE
F	FLAGSHIP
G (EHS)	CASCADE (EEV)

⑦ Rating Voltage

C	1Ø, 208~230V, 60Hz
---	--------------------

⑧ Mode

H	Heat Pump (R410a)
R	Heat Recovery (R410a)

2 Specification

Specifications

1) Technical specifications

Model				AM007FNLDCH/AA	AM009FNLDCH/AA	AM012FNLDCH/AA	AM018FNLDCH/AA
Power Supply		∅, V, Hz		1,208-230,60	1,208-230,60	1,208-230,60	1,208-230,60
Mode			-	HP/HR	HP/HR	HP/HR	HP/HR
Performance	Capacity (Nominal)	Cooling *1)	Btu/h	7,500	9,500	12,000	18,000
			US RT	0.63	0.79	1.00	1.50
		Heating *1)	Btu/h	8,500	10,500	13,500	20,000
			US RT	0.71	0.88	1.12	1.67
Power	Power Input (Nominal)	Cooling *1)	W	47.00	60.00	75.00	140.00
		Heating *1)	W	47.00	60.00	75.00	140.00
	Current Input (Nominal)	Cooling *1)	A	0.32	0.40	0.51	0.94
		Heating *1)	A	0.32	0.40	0.51	0.94
Fan	Motor	Type	-	Sirocco Fan	Sirocco Fan	Sirocco Fan	Sirocco Fan
		Output x n	W	40 x 1	50 x 1	60 x 1	100 x 1
	Air Flow Rate	H/M/L (UL)	CFM	282.53/247.21/211.90	317.84/282.53/247.21	353.16/300.19/247.21	547.40/494.42/441.45
	External Pressure	Min / Std / Max	Pa	0.00/9.81/39.23	0.00/9.81/39.23	0.00/9.81/39.23	0.00/9.81/39.23
			in. Wg	0.00/0.04/0.16	0.00/0.04/0.16	0.00/0.04/0.16	0.00/0.04/0.16
Piping Connections	Liquid Pipe	∅, mm	6.35	6.35	6.35	6.35	
		∅, inch	1/4	1/4	1/4	1/4	
	Gas Pipe	∅, mm	12.70	12.70	12.70	12.70	
		∅, inch	1/2	1/2	1/2	1/2	
	Drain Pipe	∅, mm	VP25 (OD 32,ID 25)	VP25 (OD 32,ID 25)	VP25 (OD 32,ID 25)	VP25 (OD 32,ID 25)	
Refrigerant	Type	-	R410A	R410A	R410A	R410A	
	Control Method	-	EEV INCLUDED	EEV INCLUDED	EEV INCLUDED	EEV INCLUDED	
Sound	Sound Pressure *2)	High / Mid / Low	dBA	26.0/24.0/21.0	27.0/25.0/23.0	29.0/28.0/27.0	36.0/34.0/31.0
Dimensions	Net Weight	kg	24.50	24.50	24.50	30.00	
		lbs	54.01	54.01	54.01	66.14	
	Shipping Weight	kg	28.50	28.50	28.50	34.50	
		lbs	62.83	62.83	62.83	76.06	
	Net Dimensions (W×H×D)	mm	900 x 199 x 600	900 x 199 x 600	900 x 199 x 600	1100 x 199 x 600	
		inch	35.43 x 7.83 x 23.62	35.43 x 7.83 x 23.62	35.43 x 7.83 x 23.62	43.31 x 7.83 x 23.62	
	Shipping Dimensions (W×H×D)	mm	1150 x 280 x 710	1150 x 280 x 710	1150 x 280 x 710	1350 x 280 x 710	
inch		45.28 x 11.02 x 27.95	45.28 x 11.02 x 27.95	45.28 x 11.02 x 27.95	53.15 x 11.02 x 27.95		
Panel Size	Panel model	model name	-	-	-	-	
		kg	-	-	-	-	
	Panel Net Weight	lbs	-	-	-	-	
		kg	-	-	-	-	
	Shipping Weight	lbs	-	-	-	-	
		kg	-	-	-	-	
	Net Dimensions (W×H×D)	mm	-	-	-	-	
		inch	-	-	-	-	
Shipping Dimensions (W×H×D)	mm	-	-	-	-		
	inch	-	-	-	-		
Additional Accessories	Drain pump	Drain pump	model name	MDP-E075SEE3D	MDP-E075SEE3D	MDP-E075SEE3D	MDP-E075SEE3D
		Max. lifting Height / Displacement	mm / liter/h	750 / 24	750 / 24	750 / 24	750 / 24
	Air Filter		-	Long life filter	Long life filter	Long life filter	Long life filter

1) Nominal Capacity are based on (Equivalent refrigerant piping : 25ft , Level differences : 0ft);

- Cooling : Indoor temperature : 80°F DB, 67°F WB / Outdoor temperature : 95°F DB, 75°F WB

- Heating : Indoor temperature : 70°F DB, 60°F WB / Outdoor temperature : 47°F DB, 43°F WB

2) Sound pressure was acquired in a dead room. Thus actual noise level may be different depending on the installation conditions.

3) Specifications are subject to change without prior notice for product improvement.

2 Specification

Specifications

1) Technical specifications

Model				AM024FNLDCH/AA	AM030FNLDCH/AA	AM036FNLDCH/AA	AM048FNLDCH/AA
Power Supply			∅, V, Hz	1,208-230,60	1,220-240,50	1,208-230,60	1,208-230,60
Mode			-	HP/HR	HP/HR	HP/HR	HP/HR
Performance	Capacity (Nominal)	Cooling *1)	Btu/h	24,000	30,000	36,000	48,000
			US RT	2.00	2.50	3.00	4.00
		Heating *1)	Btu/h	27,000	34,000	40,000	54,000
			US RT	2.25	2.83	3.33	4.50
Power	Power Input (Nominal)	Cooling *1)	W	145.00	95.00	120.00	180.00
		Heating *1)	W	145.00	95.00	120.00	180.00
	Current Input (Nominal)	Cooling *1)	A	0.98	0.80	1.05	1.40
		Heating *1)	A	0.98	0.80	1.05	1.40
Fan	Motor	Type	-	Sirocco Fan	Sirocco Fan	Sirocco Fan	Sirocco Fan
		Output x n	W	110 x 1	80 x 1	100 x 1	160 x 1
	Air Flow Rate	H/M/L (UL)	CFM	582.71/529.74/476.77	1,094.80/918.22/812.27	1,200.74/1,024.16/847.58	1,342.01/1,130.11/953.53
	External Pressure	Min / Std / Max	Pa	0.00/9.81/39.23	0.00/9.81/58.84	0.00/29.42/58.84	0.00/29.42/58.84
			in. Wg	0.00/0.04/0.16	0.00/0.04/0.24	0.00/0.12/0.24	0.00/0.12/0.24
Piping Connections	Liquid Pipe	∅, mm	9.52	9.52	9.52	9.52	
		∅, inch	3/8	3/8	3/8	3/8	
	Gas Pipe	∅, mm	15.88	15.88	15.88	15.88	
		∅, inch	5/8	5/8	5/8	5/8	
Drain Pipe	∅, mm	VP25 (OD 32,ID 25)	VP25 (OD 32,ID 25)	VP25 (OD 32,ID 25)	VP25 (OD 32,ID 25)		
Refrigerant	Type	-	R410A	R410A	R410A	R410A	
	Control Method	-	EEV INCLUDED	EEV INCLUDED	EEV INCLUDED	EEV INCLUDED	
Sound	Sound Pressure *2)	High / Mid / Low	dBA	38.0/36.0/33.0	37.0/36.0/34.0	37.0/36.0/34.0	39.0/38.0/36.0
Dimensions	Net Weight	kg	30.00	40.00	40.00	41.50	
		lbs	66.14	88.18	88.18	91.49	
	Shipping Weight	kg	34.50	47.00	47.00	48.50	
		lbs	76.06	103.62	103.62	106.92	
	Net Dimensions (W×H×D)	mm	1100 x 199 x 600	1300 x 295 x 690	1300 x 295 x 690	1300 x 295 x 690	
		inch	43.31 x 7.83 x 23.62	51.18 x 11.61 x 27.17	51.18 x 11.61 x 27.17	51.18 x 11.61 x 27.17	
	Shipping Dimensions (W×H×D)	mm	1350 x 280 x 710	1575 x 370 x 835	1575 x 370 x 835	1575 x 370 x 835	
		inch	53.15 x 11.02 x 27.95	62.01 x 14.57 x 32.87	62.01 x 14.57 x 32.87	62.01 x 14.57 x 32.87	
Panel Size	Panel model	model name	-	-	-	-	
		kg	-	-	-	-	
	Panel Net Weight	lbs	-	-	-	-	
		kg	-	-	-	-	
	Shipping Weight	lbs	-	-	-	-	
		mm	-	-	-	-	
	Net Dimensions (W×H×D)	inch	-	-	-	-	
		mm	-	-	-	-	
Shipping Dimensions (W×H×D)	inch	-	-	-	-		
	mm	-	-	-	-		
Additional Accessories	Drain pump	Drain pump	model name	MDP-E075SEE3D	MDP-E075SEE3D	MDP-E075SEE3D	MDP-E075SEE3D
		Max. lifting Height / Displacement	mm/liter/h	750 / 24	750 / 24	750 / 24	750 / 24
	Air Filter	-	-	Long life filter	Long life filter	Long life filter	Long life filter

1) Nominal Capacity are based on (Equivalent refrigerant piping : 25ft , Level differences : 0ft);

- Cooling : Indoor temperature : 80°F DB, 67°F WB / Outdoor temperature : 95°F DB, 75°F WB

- Heating : Indoor temperature : 70°F DB, 60°F WB / Outdoor temperature : 47°F DB, 43°F WB

2) Sound pressure was acquired in a dead room. Thus actual noise level may be different depending on the installation conditions.

3) Specifications are subject to change without prior notice for product improvement.

3 Capacity Table

Capacity tables

2) Heating

TC : Total Capacity(Btu/h)

Model	Outdoor Temperature (F)		Indoor Temperature (F, DB)				
			61	65	70	72	75
	DB	WB	TC	TC	TC	TC	TC
007	-3.6	-4	5,500	5,500	5,200	5,200	5,200
	-1.8	-2	5,600	5,600	5,300	5,200	5,200
	2	1	5,700	5,700	5,400	5,300	5,300
	6	5	5,900	5,900	5,600	5,500	5,300
	10	9	6,200	6,000	5,900	5,900	5,700
	13	12	6,500	6,400	6,300	6,200	6,200
	17	15	6,700	6,500	6,500	6,400	6,300
	19	18	6,900	6,700	6,600	6,500	6,400
	23	21	7,200	7,100	7,000	6,900	6,500
	26	24	7,600	7,400	7,200	7,100	6,900
	30	28	7,800	7,600	7,400	7,200	7,000
	35	32	8,000	7,800	7,600	7,400	7,100
	39	36	8,300	8,300	8,000	7,800	7,400
	44	40	8,700	8,700	8,200	8,000	7,400
	47	43	9,000	9,000	8,500	8,100	7,400
	51	47	9,400	9,200	8,500	8,100	7,400
	54	50	9,800	9,200	8,500	8,100	7,400
57	53	9,900	9,400	8,500	8,100	7,400	
60	56	10,300	9,600	8,500	8,100	7,400	
009	-3.6	-4	6,800	6,800	6,400	6,400	6,400
	-1.8	-2	6,900	6,900	6,500	6,500	6,500
	2	1	7,000	7,000	6,700	6,500	6,500
	6	5	7,200	7,200	6,900	6,800	6,500
	10	9	7,600	7,500	7,300	7,200	7,000
	13	12	8,100	7,900	7,800	7,600	7,600
	17	15	8,300	8,100	8,000	7,900	7,800
	19	18	8,600	8,300	8,200	8,100	7,900
	23	21	8,900	8,800	8,600	8,600	8,100
	26	24	9,400	9,200	8,900	8,800	8,600
	30	28	9,600	9,400	9,200	8,900	8,600
	35	32	9,900	9,600	9,400	9,200	8,800
	39	36	10,300	10,300	9,900	9,600	9,200
	44	40	10,700	10,700	10,200	9,900	9,200
	47	43	11,100	11,100	10,500	10,000	9,200
	51	47	11,600	11,400	10,500	10,000	9,200
	54	50	12,100	11,400	10,500	10,000	9,200
57	53	12,300	11,600	10,500	10,000	9,200	
60	56	12,700	11,800	10,500	10,000	9,200	
012	-3.6	-4	8,700	8,700	8,200	8,200	8,200
	-1.8	-2	8,900	8,900	8,400	8,300	8,300
	2	1	9,000	9,000	8,600	8,400	8,400
	6	5	9,300	9,300	8,900	8,700	8,400
	10	9	9,800	9,600	9,400	9,300	9,000
	13	12	10,400	10,100	10,000	9,800	9,800
	17	15	10,700	10,400	10,300	10,100	10,000
	19	18	11,000	10,700	10,500	10,400	10,100
	23	21	11,500	11,300	11,100	11,000	10,400
	26	24	12,100	11,800	11,500	11,300	11,000
	30	28	12,400	12,100	11,800	11,500	11,100
	35	32	12,700	12,400	12,100	11,800	11,300
	39	36	13,200	13,200	12,700	12,400	11,800
	44	40	13,800	13,800	13,100	12,700	11,800
	47	43	14,300	14,300	13,500	12,900	11,800
	51	47	14,900	14,600	13,500	12,900	11,800
	54	50	15,500	14,600	13,500	12,900	11,800
57	53	15,800	14,900	13,500	12,900	11,800	
60	56	16,300	15,200	13,500	12,900	11,800	
018	-3.6	-4	12,900	12,600	12,400	12,200	12,200
	-1.8	-2	13,100	12,900	12,600	12,400	12,400
	2	1	13,200	13,200	12,700	12,600	12,600
	6	5	13,900	13,600	13,100	12,900	12,600
	10	9	14,500	14,200	13,900	13,900	13,600
	13	12	15,200	15,200	14,700	14,500	14,500
	17	15	15,700	15,500	15,200	15,000	14,700
	19	18	16,200	15,900	15,700	15,500	14,900
	23	21	17,200	16,900	16,400	16,200	15,500
	26	24	17,900	17,500	17,200	16,900	16,200
	30	28	18,300	18,000	17,500	17,200	16,400
	35	32	18,800	18,500	17,900	17,500	16,500
	39	36	19,500	19,500	18,800	18,500	17,500
	44	40	20,500	20,200	19,300	18,800	17,500
	47	43	21,500	21,200	20,000	19,200	17,500
	51	47	22,100	21,500	20,000	19,200	17,500
	54	50	22,800	21,800	20,000	19,200	17,500
57	53	23,500	22,100	20,000	19,200	17,500	
60	56	24,100	22,500	20,000	19,200	17,500	

3 Capacity Table

Capacity tables

2) Heating

TC : Total Capacity(Btu/h)

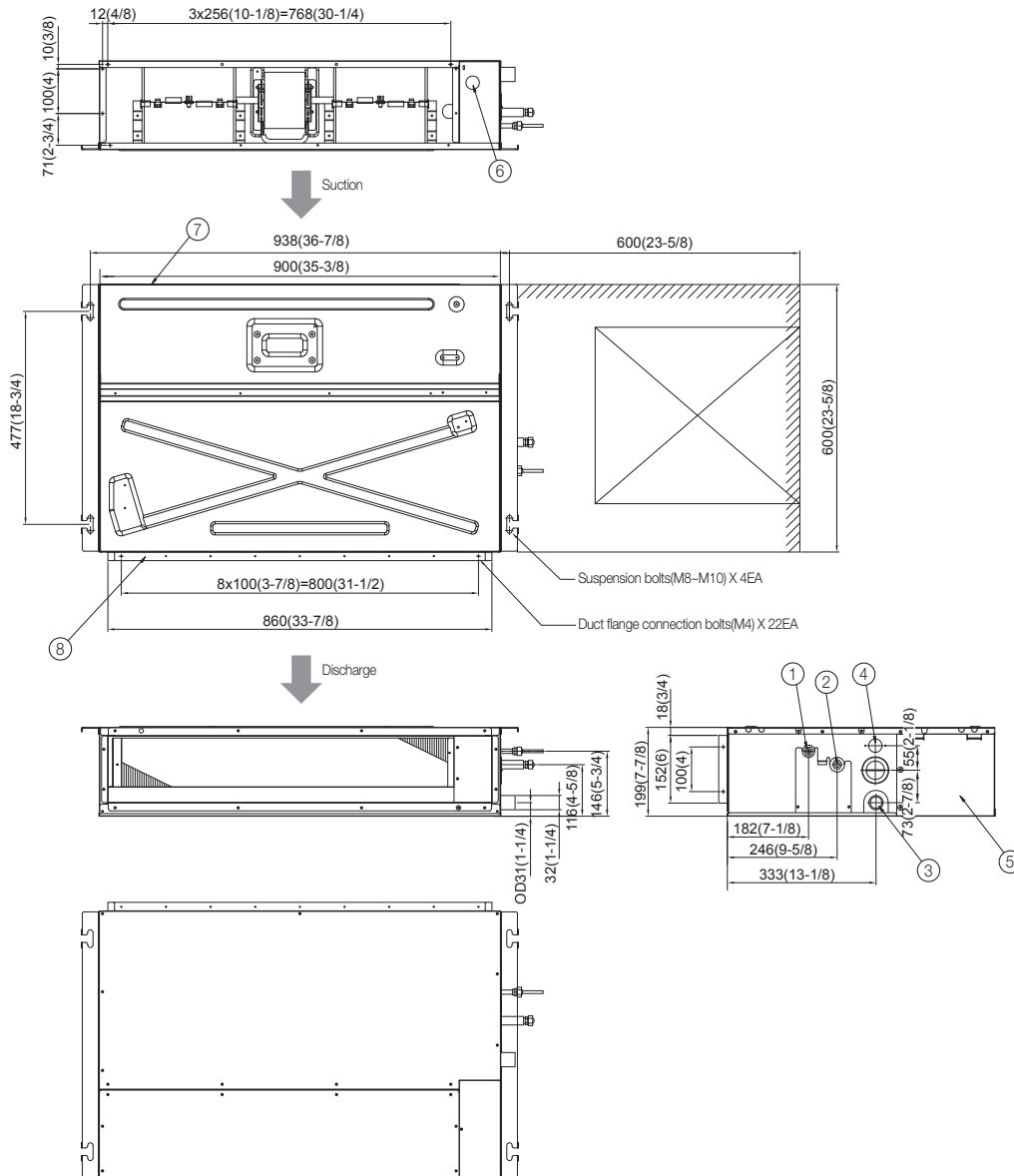
Model	Outdoor Temperature (F)		Indoor Temperature (F, DB)				
			61	65	70	72	75
	DB	WB	TC	TC	TC	TC	TC
024	-3.6	-4	17,200	17,200	16,700	16,500	16,500
	-1.8	-2	17,500	17,400	16,800	16,700	16,700
	2	1	17,900	17,500	17,000	16,800	16,800
	6	5	18,600	18,200	17,500	17,200	16,800
	10	9	19,600	19,300	18,800	18,600	18,200
	13	12	20,700	20,300	19,800	19,600	19,600
	17	15	21,200	20,900	20,300	20,200	20,000
	19	18	21,700	21,400	20,900	20,700	20,300
	23	21	22,800	22,800	22,100	21,700	21,000
	26	24	24,200	23,800	23,000	22,400	21,700
	30	28	24,700	24,400	23,500	23,000	22,100
	35	32	25,200	24,900	24,000	23,500	22,400
	39	36	26,600	26,300	25,200	24,900	23,800
	44	40	27,700	27,400	26,100	25,200	23,800
	47	43	28,800	28,400	27,000	25,900	23,800
030	-3.6	-4	21,300	21,300	20,700	20,500	20,500
	-1.8	-2	21,800	21,800	21,100	20,900	20,700
	2	1	22,300	22,300	21,400	21,300	20,900
	6	5	23,700	23,000	22,000	21,600	21,300
	10	9	24,800	24,400	23,600	23,400	23,000
	13	12	25,900	25,500	25,000	24,800	24,800
	17	15	26,700	26,400	25,800	25,500	25,100
	19	18	27,600	27,300	26,600	26,200	25,500
	23	21	29,000	28,700	27,800	27,300	26,600
	26	24	30,500	30,100	29,200	28,700	27,300
	30	28	31,200	30,800	29,800	29,200	27,800
	35	32	31,900	31,500	30,500	29,800	28,300
	39	36	33,300	32,900	31,900	31,200	29,800
	44	40	35,100	34,400	32,900	31,900	29,800
	47	43	36,500	35,800	34,000	32,600	29,800
036	-3.6	-4	24,700	24,700	24,300	24,300	24,300
	-1.8	-2	25,700	25,300	24,800	24,700	24,500
	2	1	26,700	26,000	25,200	25,000	24,700
	6	5	28,000	27,000	26,000	25,700	25,000
	10	9	29,300	28,700	27,700	27,300	27,000
	13	12	30,700	30,000	29,500	29,300	29,000
	17	15	31,500	31,000	30,300	30,000	29,500
	19	18	32,300	32,000	31,000	30,700	30,000
	23	21	34,000	33,700	32,500	32,000	31,000
	26	24	35,700	35,300	34,300	33,700	32,300
	30	28	36,700	36,200	35,200	34,300	32,800
	35	32	37,700	37,000	36,000	35,000	33,300
	39	36	39,300	38,700	37,500	36,700	35,300
	44	40	41,000	40,700	38,800	37,700	35,300
	47	43	43,000	42,300	40,000	38,300	35,300
048	-3.6	-4	33,300	33,300	33,000	33,000	32,600
	-1.8	-2	34,400	34,000	33,300	33,300	32,800
	2	1	35,400	34,700	33,700	33,700	33,000
	6	5	37,500	36,500	34,900	34,400	33,300
	10	9	39,300	38,600	37,500	37,200	36,100
	13	12	41,000	40,700	39,800	39,600	38,900
	17	15	42,300	41,700	40,900	40,500	39,600
	19	18	43,500	42,800	41,900	41,400	40,300
	23	21	45,900	45,200	43,800	43,100	42,100
	26	24	48,400	47,700	46,100	45,200	43,500
	30	28	49,400	48,700	47,100	46,100	44,200
	35	32	50,500	49,800	48,000	47,000	44,900
	39	36	52,900	52,200	50,500	49,400	47,300
	44	40	55,400	54,700	52,100	50,500	47,300
	47	43	57,900	56,800	54,000	51,900	47,300

4 Dimensional Drawing

Dimensional drawing

1) AM007/009/012FNLDCH***

Unit : mm(inch)



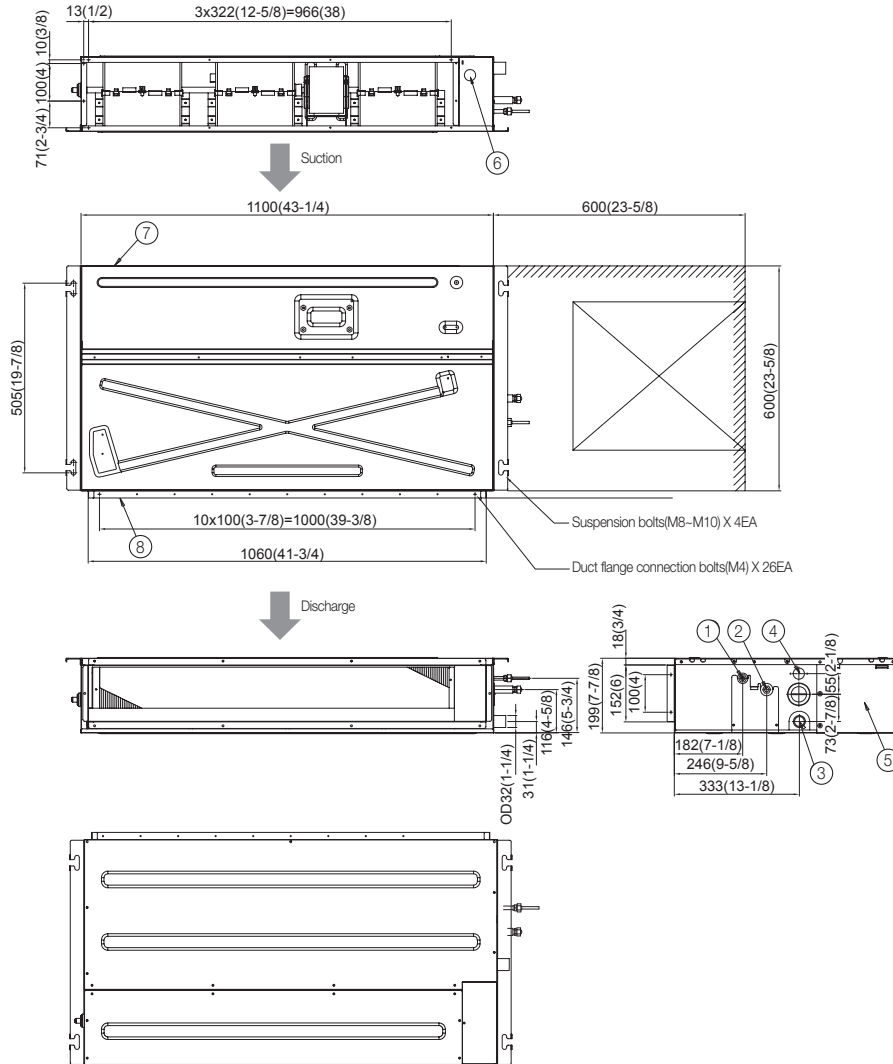
No.	Name	Description		
		7.5 MBH	9.5 MBH	12.0 MBH
①	Liquid pipe connection	Ø6.35(1/4") Flare		
②	Gas pipe connection	Ø12.70(1/2") Flare		
③	Drain pipe connection without optional drain pump kits	VP25 (OD 32, ID 25) / VP25 (OD 1 1/4", ID 1")		
④	Drain pipe connection with optional drain pump kits	VP25 (OD 32, ID 25) / VP25 (OD 1 1/4", ID 1")		
⑤	Control unit	-		
⑥	Conduit for power supply & communication wiring	-		
⑦	Return air side	-		
⑧	Air outlet duct flange	-		

4 Dimensional Drawing

Dimensional drawing

2) AM018/024FNLDCH***

Unit : mm(inch)



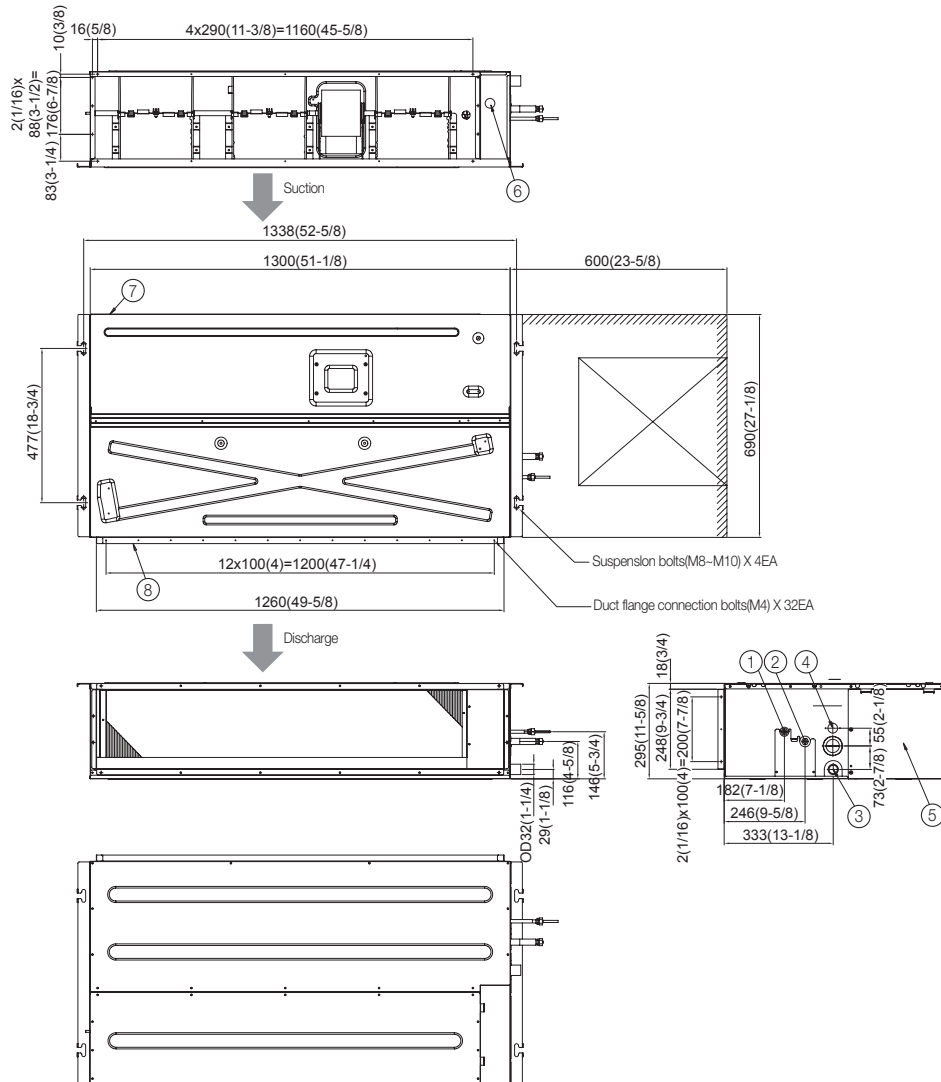
No.	Name	Description	
		18.0 MBH	24.0 MBH
①	Liquid pipe connection	Ø6.35(1/4") Flare	Ø9.52(3/8") Flare
②	Gas pipe connection	Ø12.70(1/2") Flare	Ø15.88(5/8") Flare
③	Drain pipe connection without optional drain pump kits	VP25 (OD 32, ID 25) / VP25 (OD 1 1/4", ID 1")	
④	Drain pipe connection with optional drain pump kits	VP25 (OD 32, ID 25) / VP25 (OD 1 1/4", ID 1")	
⑤	Control unit	-	
⑥	Conduit for power supply & communication wiring	-	
⑦	Return air side	-	
⑧	Air outlet duct flange	-	

4 Dimensional Drawing

Dimensional drawing

3) AM030/036/048FNLDCH***

Unit : mm(inch)

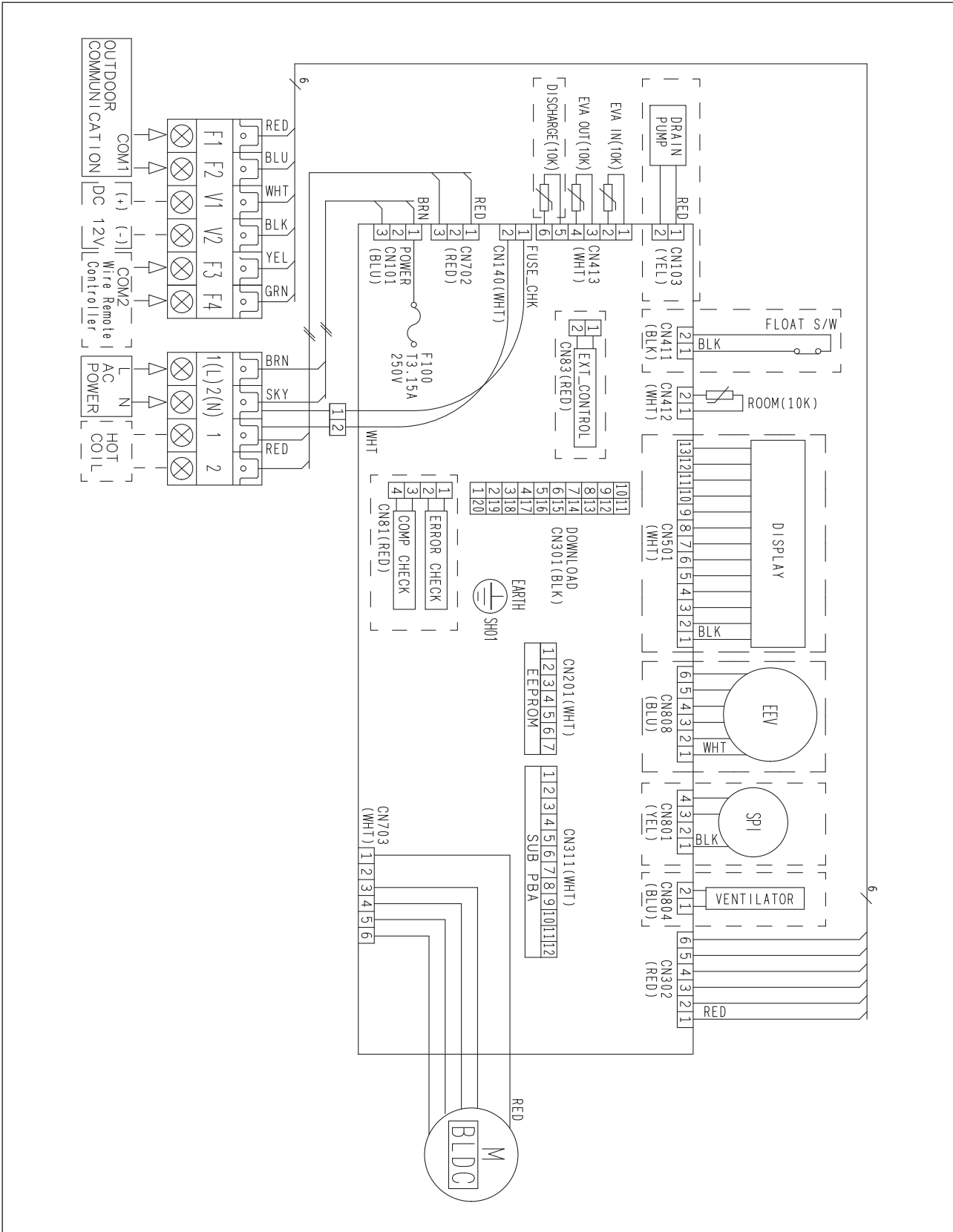


No.	Name	Description		
		30.0 MBH	36.0 MBH	48.0 MBH
①	Liquid pipe connection	Ø9.52(3/8") Flare		
②	Gas pipe connection	Ø15.88(5/8") Flare		
③	Drain pipe connection without optional drain pump kits	VP25 (OD 32, ID 25) / VP25 (OD 1 1/4", ID 1")		
④	Drain pipe connection with optional drain pump kits	VP25 (OD 32, ID 25) / VP25 (OD 1 1/4", ID 1")		
⑤	Control unit	-		
⑥	Conduit for power supply & communication wiring	-		
⑦	Return air side	-		
⑧	Air outlet duct flange	-		

5 Electrical Wiring Diagram

Electrical wiring diagram

&L5A \$' \$/\$' *#\$(, : B@9<***

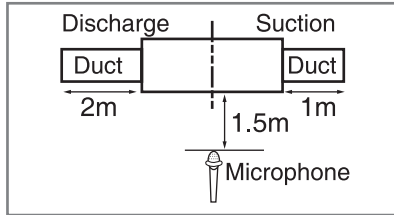


6 Sound Pressure Level

Sound pressure level

1) Operation sound level

Unit : dB(A)



Model	High	Low
AM007FNLDCH/AA	26	21
AM009FNLDCH/AA	27	23
AM012FNLDCH/AA	29	27
AM018FNLDCH/AA	36	31

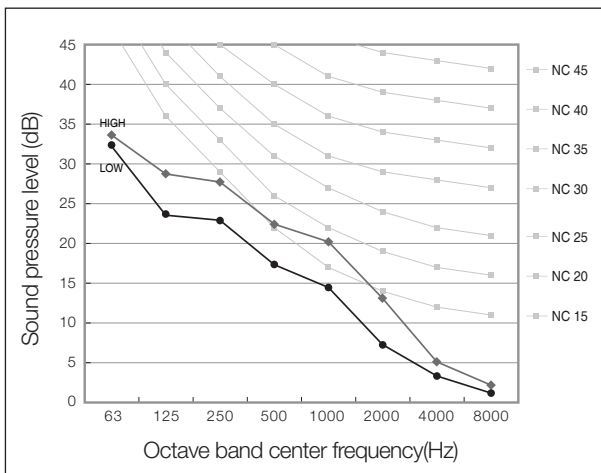
Model	High	Low
AM024FNLDCH/AA	38	33
AM030FNLDCH/AA	37	34
AM036FNLDCH/AA	37	34
AM048FNLDCH/AA	39	36

✓ Note

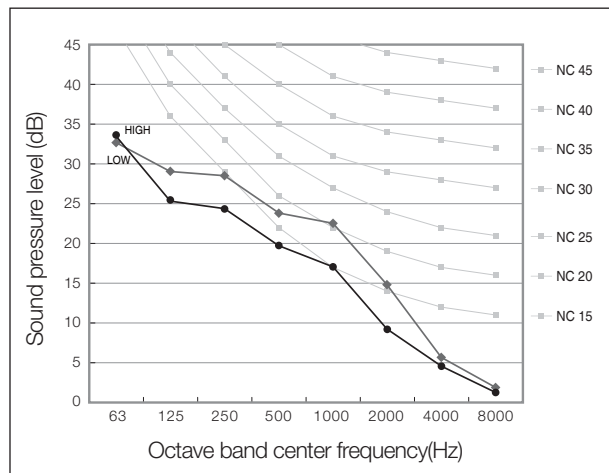
- ◆ These operation values were obtained in an anechoic room. Sound pressure level will vary depending on a range of factors such as the construction of the particular room where the equipment is installed.
- ◆ Operation sound level may differ depending on operation and ambient conditions.

2) NC curves

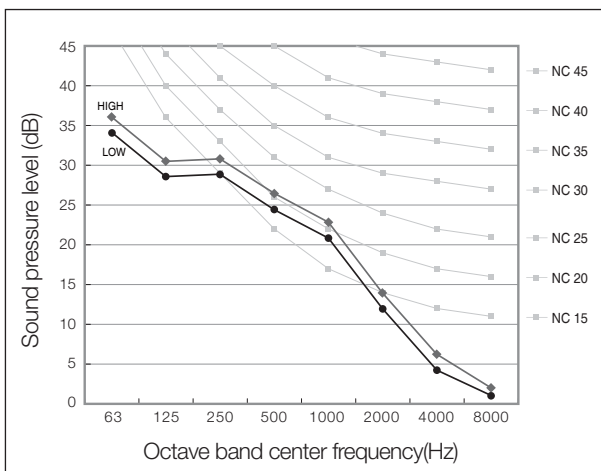
(1) AM007FNLDCH/AA



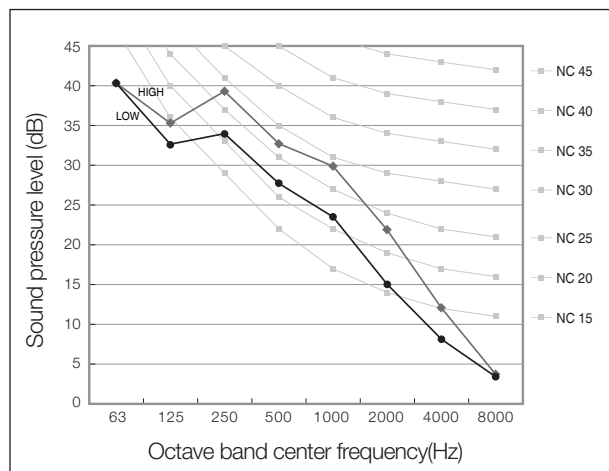
(2) AM009FNLDCH/AA



(3) AM012FNLDCH/AA



(4) AM018FNLDCH/AA

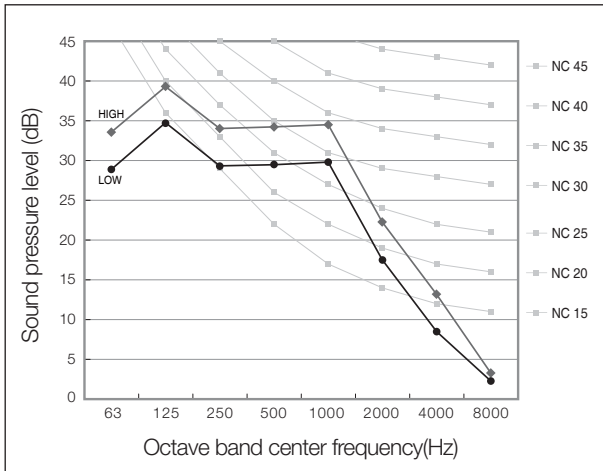


6 Sound Pressure Level

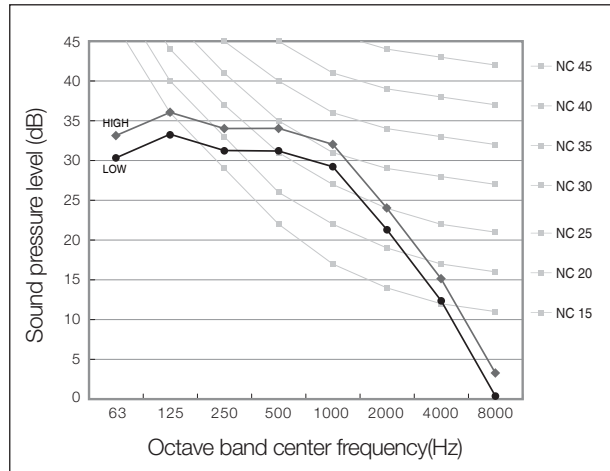
Sound pressure level

2) NC curves

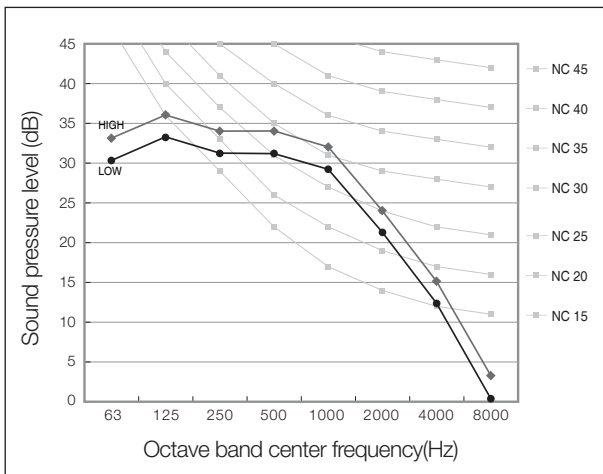
(5) AM024FNLDCH/AA



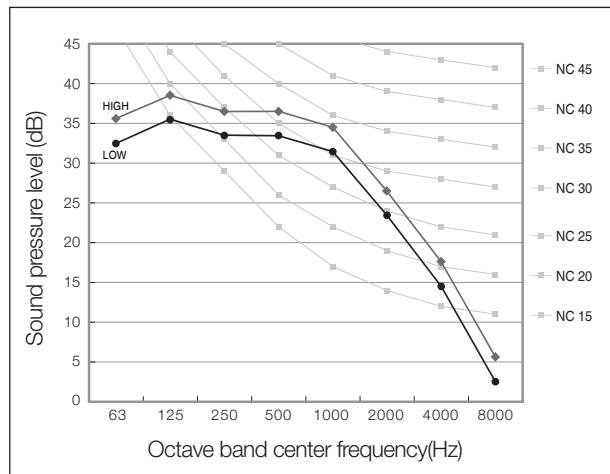
(6) AM030FNLDCH/AA



(7) AM036FNLDCH/AA



(8) AM048FNLDCH/AA

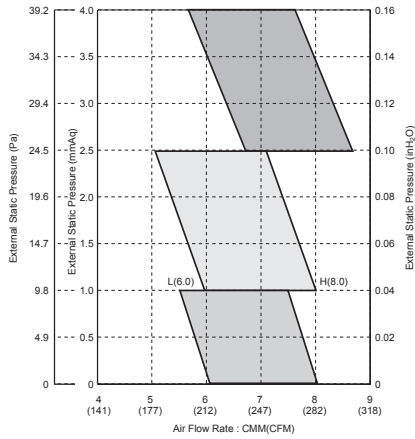


7 Temperature and Air Flow Distribution

Recommended operation range

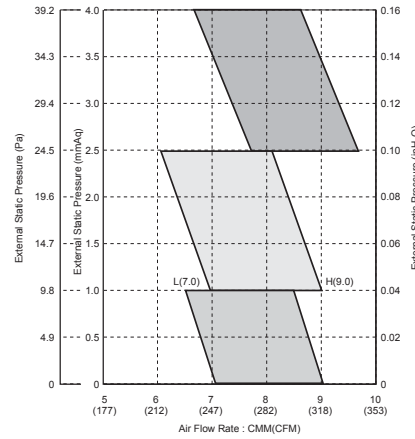
◆ Adjust option code according to the actual installation condition (external static pressure).

(1) AM007FNLDCH/AA



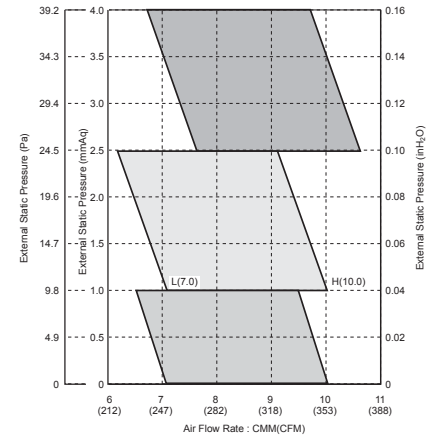
External Static pressure (InH ₂ O / mmAq)	Option code
0	010054-1254AE-201616-331110
0.04 / 1	010054-1255D1-201616-331110
0.08 / 2	010054-1255D1-201616-331110
0.16 / 4	010054-125904-201616-331110

(2) AM009FNLDCH/AA



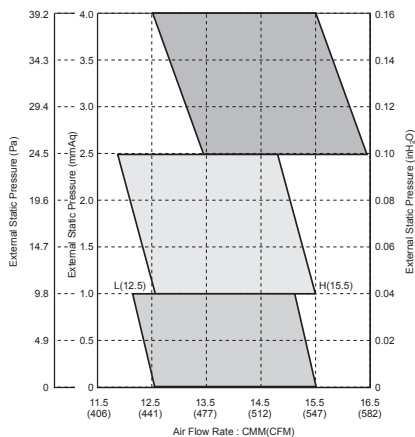
External Static pressure (InH ₂ O / mmAq)	Option code
0	010054-121913-201C1C-331110
0.04 / 1	010054-121946-201C1C-331110
0.08 / 2	010054-121946-201C1C-331110
0.16 / 4	010054-121979-201C1C-331110

(3) AM012FNLDCH/AA



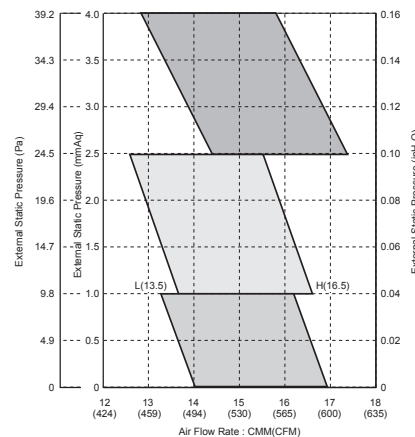
External Static pressure (InH ₂ O / mmAq)	Option code
0	010054-121946-202323-331110
0.04 / 1	010054-121979-202323-331110
0.08 / 2	010054-121979-202323-331110
0.16 / 4	010054-1219AC-202323-331110

(4) AM018FNLDCH/AA



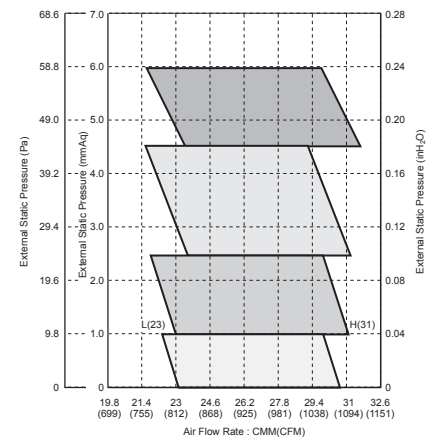
External Static pressure (InH ₂ O / mmAq)	Option code
0	010054-1259BA-203434-331110
0.04 / 1	010054-1259ED-203434-331110
0.08 / 2	010054-1259ED-203434-331110
0.16 / 4	010054-125E10-203434-331110

(5) AM024FNLDCH/AA



External Static pressure (InH ₂ O / mmAq)	Option code
0	010054-125D2D-204848-331110
0.04 / 1	010054-125E50-204848-331110
0.08 / 2	010054-125E50-204848-331110
0.16 / 4	010054-125E83-204848-331110

(6) AM030FNLDCH/AA



External Static pressure (InH ₂ O / mmAq)	Option code
0	010054-1B5915-205A5A-331110
0.04 / 1	010054-1B5948-205A5A-331110
0.12 / 3	010054-1B599F-205A5A-331110
0.24 / 6	010054-1B5AE4-205A5A-331110

Note

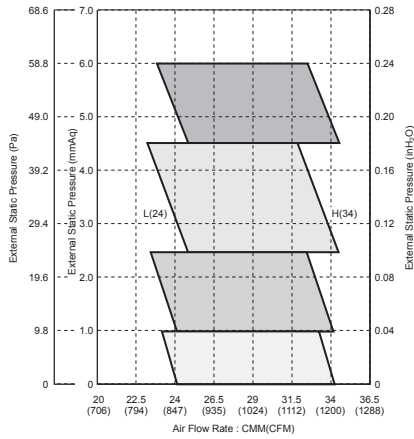
- ◆ ESP = External Static Pressure
- ◆ The graphs display the available external static pressure range of installed indoor units. Therefore, they do not reflect the actual change of external static pressure and airflow rate according to adjusted airflow (High-Mid-Low) of installed indoor units.

7 Temperature and Air Flow Distribution

Recommended operation range

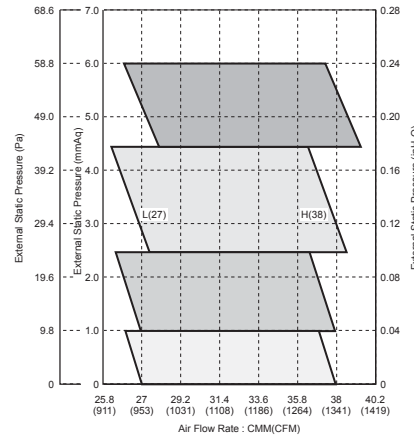
◆ Adjust option code according to the actual installation condition (external static pressure).

(7) AM036FNLDCH/AA



External Static pressure (InH ₂ O / mmAq)	Option code
0	010054-1B5956-206E6E-331110
0.04 / 1	010054-1B5989-206E6E-331110
0.12 / 3	010054-1B5AD0-206E6E-331110
0.24 / 6	010054-1B5E25-206E6E-331110

(8) AM048FNLDCH/AA



External Static pressure (InH ₂ O / mmAq)	Option code
0	010054-1B59B9-209191-331110
0.04 / 1	010054-1B59EC-209191-331110
0.12 / 3	010054-1B5E33-209191-331110
0.24 / 6	010054-1B5E88-209191-331110

Note

- ◆ ESP = External Static Pressure
- ◆ The graphs display the available external static pressure range of installed indoor units. Therefore, they do not reflect the actual change of external static pressure and airflow rate according to adjusted airflow (High-Mid-Low) of installed indoor units.

SAMSUNG

2015.11
Ver 1.0

Samsung Electronics Co., LTD.

B2B PM / SE

Head Office (Suwon Korea) 129, Samsung-Ro, Yeongtong-Gu, Suwon City, Gyeonggi-Do, Korea 443-742

Website : www.samsung.com Email : airconditioner@samsung.com

Images and data in this book may subject to change without prior notice.

SAMSUNG